



Secure WiFi



Beacons & Messaging



Powerful Analytics



Scalable Solution



The Power of Your Own Wireless

 [yo-wireless-ltd](#)

 [yowirelessglobal](#)

 [yowireless.com](#)

The Complete Guest Access Solutions Platform:



Seamless Guest WiFi

Give your customers simple to use, secure & reliable WiFi access, delivered via IWF & GDPR standards. Creating a user environment where your customers can be assured their data is fully protected at all times.



Tailored User Journey

A unique customer centric mobile user experience is essential to enhance your customers user journey & add brand value. Login via social media, email & SMS, guest messaging & user profiling becomes highly personalised & bespoke.



Analytical Insights

By using an easy to navigate browser based intuitive dashboard, allowing informed & precise management decisions to be made, based on direct user location activity data, you can learn more about who your customers are.



Rules Engine

Dynamically served marketing messages & redirect to specific content for different user demographics, location, last purchase & new vs. returning visitors & other logic.



Yo Beacon® Technology

Our patented Yo Beacon® technology pinpoints device location & provides a heatmap of visitor footfall, also enabling our location marketing messages.

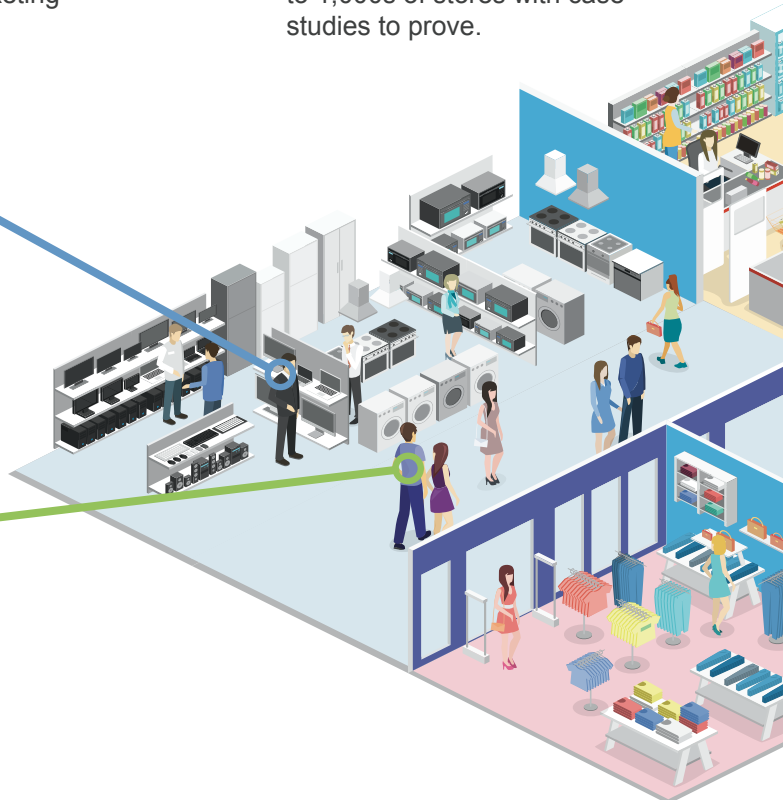


Flexibility in Design

The Yo Wireless Platform is 100% cloud based, serving customers around the globe. It's scalable & reliable for 1 to 1,000s of stores with case studies to prove.

Name: John Smith
Info: 4th visit, high dwell time in tech department.
Custom Journey: Location triggered discount code for new laptops.

Name: Gemma Palmer
Info: 2nd visit, previously ate in the store cafe.
Custom Journey: Welcome back message and voucher for a free coffee in the cafe.



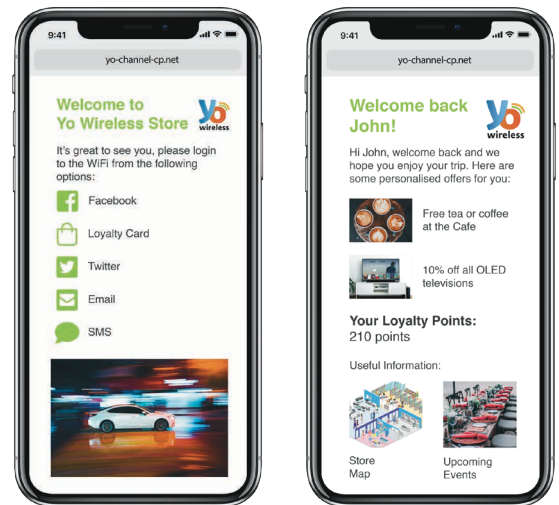
What makes Yo Wireless different?



Yo Wireless encompasses a true total solutions ethos in the design of our cloud-based product set. The guest WiFi is a proven foundation interface for generating highly secure data that drives high value analytical content.

The powerful analytics engine, coupled to real time messaging & beacon technology, offers unique, previously unobtainable insights into your client's behaviour. This simply means the Yo Wireless solution is driven around your business goals & desired outcomes & not around restrictive legacy technology limitations.

In essence, we are a forward thinking experienced team, who are dedicated to delivering high value commercial results, from the mobile digital footprint being generated & used by today's well informed smart device user base.

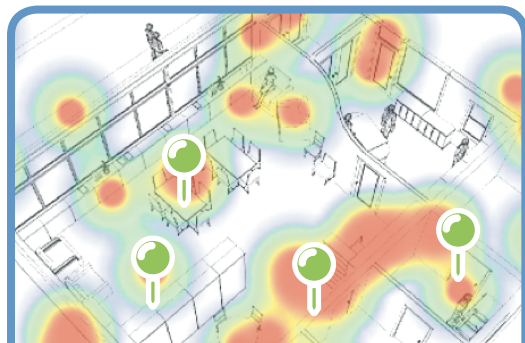
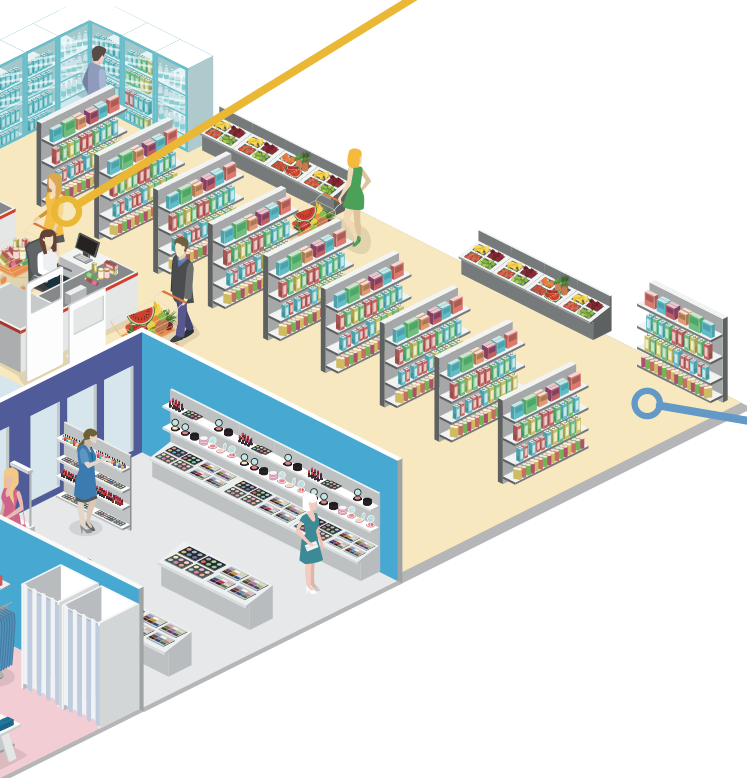


Yo Wireless WiFi Login Page Examples for new vs. returning visitors

Name: Unknown

Info: First visit, signing in to WiFi for the first time.

Custom Journey: Generic welcome page with store map and useful info.



Yo Beacon® Technology

By deploying our patented Yo Beacon® technology, your marketing team will be able to pinpoint specific device location & generate heatmaps of floor areas to assess visitor footfall in identifiable zones. Once pinpointed, an Opted-In user, can then be uniquely addressed with relevant & personalised Point of Presence marketing messages. Creating a value-added experience for your clients & building a stronger brand impression for your business.



About Yo Wireless:

The leadership team and founders of Yo Wireless bring a wealth of global business experience and knowledge of the wireless technology sector to the company. The C-Suite have a proven track record of devising, developing and then growing successful international businesses within the retail, banking and government sectors.

The foundation of achievement has been and is today, centred around delivering client driven solutions and the rapid development of latest technology advances, into high performance commercial solutions. These fundamentals have

led to directly attributed success in the building of corporate businesses.

Being focussed on Research and Development as a core competency of the entire executive team has led to numerous technology patents being attributed to the individuals who now lead the business. This R&D driven success is true of the recent patent awarded for the cloud connected Yo Beacon mesh technology, that is now used to drive the key data content used in our wireless market leading mobile data solutions.

Get in touch:

Yo Wireless Global Ltd
Unit 3,
West Barn,
Old Dairy Lane,
Chichester
PO20 3AF

+44 (0) 1202 596522
www.yowireless.com
enquiries@yowireless.com